

D 1.4.2. Urban Farming-based Sustainable Land Use Model (UFSLU)

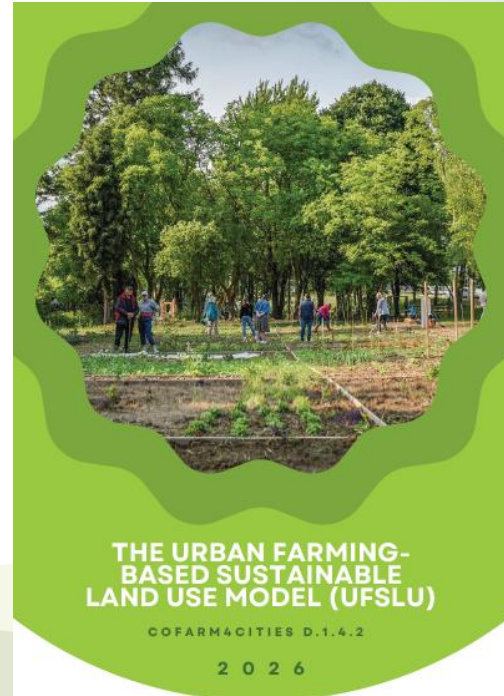
Urban Challenges

- Urban sprawl and pressure on peri-urban agricultural land
- Biodiversity loss, soil degradation, threatening food systems
- Climate change impacts on cities
- Demand for cultivable urban land



Urban Farming-based Sustainable Land Use (UFSLU) Model

- Developed within **Interreg Central Europe - CoFarm4Cities**, cca 58 pages + annex
- A **replicable framework** to integrate urban farming into urban infrastructure
- Besides the model, the project will result in **Action Plans** based on it, setting steps and actions for urban fringe farming in partner cities



Core Principles of UFSLU

- Sustainability principle
- Land-use principles
- Circular economy principles
- Community-Based Approach principle

The circular economy model:
less raw material, less waste, fewer emissions

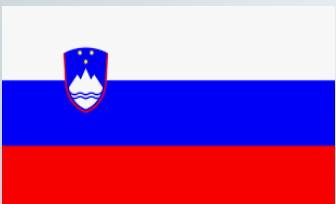


Pilot Actions in 5 Cities

- Budapest - community-based farming
- Turin - circularity, education and social cohesion
- Krakow - mixed-use urban farm
- Zagreb - public orchard and bio-waste reuse
- Ljubljana - school-based urban farm

Three Pillars of the Model

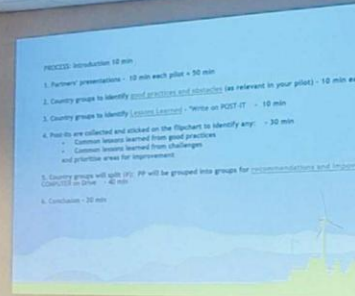
- Environmental sustainability
- Economic sustainability
- Social sustainability
- (+ self assessment guide)



Implementation Framework

- Planning phase (situation analysis, strategy development)
- Implementation phase (preparation phase, groundworks phase, testing and community involvement phase)
- Monitoring and Evaluation phase + Risk management matrix inc. Risk Mitigation Strategies (Environmental & Climate Risks, Financial Risks, Social Risks, Institutional & Governance Risks, Market Risks...)





Findings

- Brief presentation of the 5 pilots and their goals.
- Recommendations (guidelines) for UFSLU model users to support future implementations - based on a workshop in September 2025

Legal and Regulatory:

- Lock urban farming (UF) into the spatial plan – explicitly
- Adopt one citywide ordinance for community/plot gardens (not district-by-district)
- Require early public involvement when designating UF zones and when drafting garden rules
- Site selection “go/no-go” checklist
- Establish a Dedicated UF Coordinator/Office
- Prioritise Alternative Water Solutions (Avoiding Licensing Burdens)

Environmental sustainability:

- Conduct Baseline and Seasonal Soil Analysis
- Introduce Expert-Led Soil & Compost Training Programs
- Maximize Rainwater Harvesting Capacity
- Promote Passive Water Retention Techniques (mulching)
- Design for Biodiversity from the Start



Economic sustainability:

- Develop a Multi-Stream Revenue Model
- Maintain an Innovation Reserve Fund
- Use Grants to Buy Knowledge, Not Just Infrastructure
- Recognise and Formalise New Green Professions
- Support Seniors and Skilled Gardeners as Mentors
- Develop Municipal Seed & Material Banks



Social Sustainability:

- Engage Schools and Educational Institutions
- Organise Open Days for Wider Residents
- Combine education with fun (edutainment)
- Organise Logistics for School Participation
- Secure Transport Solutions
- Offer Inclusive Design (Raised beds, Wide, accessible paths)



Solution for the stakeholder involvement of an urban farm:

- Develop a single, structured Stakeholder Engagement Plan to organise involvement across project phases.
- Provide regular capacity building and training opportunities
- Maintain inclusive and ongoing communication with stakeholders, using multi-channel strategies



Conclusion

- Urban farming as a spatial planning tool
- Aligned with EU Green Deal and Farm to Fork Strategy
- Adaptable and transferable across European cities







Institut for circular economy (I.C.E)



<https://www.ice.com.hr/>



info@ice.com.hr



<https://www.facebook.com/profile.php?id=61550567162200>



<https://www.linkedin.com/company/99870198/>